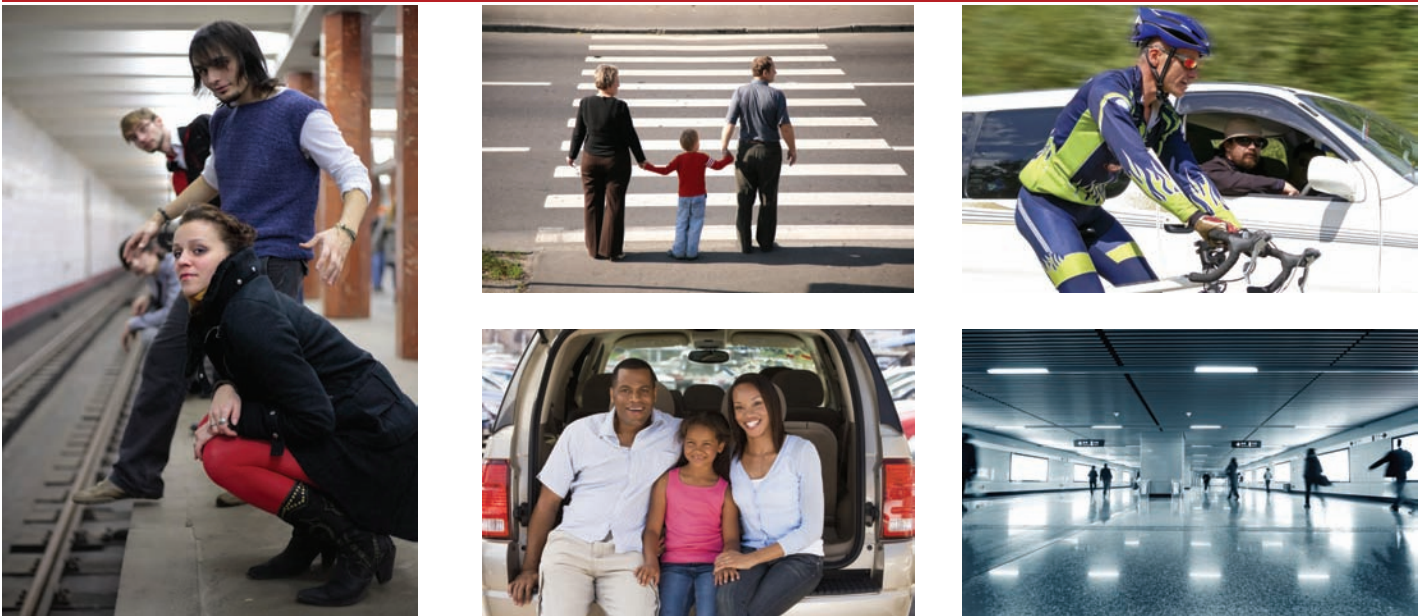


# California Department of Transportation Statewide Household Travel Survey



## Objective

The California Household Travel Survey (CHTS) is a statewide household travel survey, *the largest household travel survey ever conducted in the U.S.*, to collect data inputs for the statewide and regional travel demand forecasting models. There are many stakeholders in this effort, including the California Department of Transportation (Caltrans), all of the state's Metropolitan Planning Organizations and Regional Transportation Planning Agencies, the California Energy Commission, California Air Resources Board, the California Department of Public Health, and others.

## Approach

The survey, of approximately 60,000 California residents, include a subset of GPS households, using person-based GPS, in-vehicle GPS, and On-board Diagnostic (OBD) units. The survey will include a 24-hour diary covering all seven days of the week and will involve a continuous 12-month data collection period. The study will focus on both short trips as well as long-distance / inter-regional travel.

## Outcome

NuStats will provide data to Caltrans to update its statewide travel demand models and to provide data for future advanced model development.

## PTV NuStats

206 Wild Basin Road  
Building A, Suite 300  
Austin, Texas 78746  
[www.nustats.com](http://www.nustats.com)

Phone: 512.306.9065

Fax: 512.306.9077

E-mail:

[mmccaffrey@nustats.com](mailto:mmccaffrey@nustats.com)